



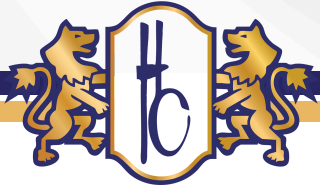
**Healthcare  
Linen & Uniform  
Specialists**



**HAND CRAFT**  
**PRODUCT CATALOG**



# TABLE OF CONTENTS



4-6	-----	<b>Patient Gowns</b>
7-9	-----	<b>Linens</b>
10 - 11	-----	<b>Spa</b>
12 - 15	-----	<b>Protective Apparel</b>
16 - 18	-----	<b>Scrubs: Angelstat</b>
19-21	-----	<b>Scrubs: Everwear</b>
22 - 25	-----	<b>Scrubs: Trace by ADI</b>
26 - 28	-----	<b>Scrubs: Respond by ADI</b>
29	-----	<b>Microfiber</b>
30 - 31	-----	<b>Mats</b>
32 - 33	-----	<b>Cubicle Curtains</b>
34	-----	<b>RFID</b>



**Central Division**  
2810 Cofer Road,  
Richmond VA 23224

**Southern Division**  
744 Gallimore Dairy Road,  
High Point NC 27265

**South East Division**  
5125 Corporate Hwy,  
Wilson NC 27893

**Production Facility**  
100 Consumer Drive,  
Martinsburg WV 25405

**Production Facility**  
2810 Cofer Road,  
Richmond VA 23224

**Depot Locations**  
Springfield, VA  
Roanoke, VA



## Family Owned and Operated Since 1969

Founded in 1969 as a neighborhood dry cleaner, HandCraft has grown into one of the Mid-Atlantic and Southeast's leading healthcare linen and apparel service providers. Headquartered in Richmond, Virginia, we proudly serve hospitals, medical practices, and healthcare systems across Delaware, Maryland, Virginia, Washington D.C., West Virginia, North Carolina, South Carolina, and Eastern Tennessee.

### By the Numbers

**130+ million** pounds of linen serviced annually

**170+** hospitals served

**2,000+** non-acute medical practices served

**700+** employees

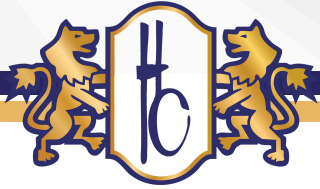
**400,000+ sq. ft.** of high-efficiency plant space

We combine advanced technology with personalized service to help healthcare organizations maintain safe, efficient operations. Our hygienically clean linens, medical apparel, dust control products, and cubicle curtain services are supported by RFID tracking technology, comprehensive reporting tools, and responsive customer support. Our laundry facilities meet or exceed CDC, OSHA, EPA, and The Joint Commission standards, ensuring the highest levels of quality, safety, and compliance.

At HandCraft, we do more than deliver products. We serve as a trusted partner committed to helping healthcare providers improve efficiency, control costs, and focus on what matters most: exceptional patient care.

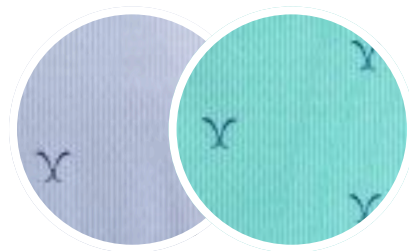
## Dedicated Customer Service

When you partner with HandCraft, you'll have a dedicated Client Relations Specialist who understands your facility, your team, and your unique needs. Whether it's answering questions, resolving issues, or helping coordinate day-to-day service, they're there to provide responsive support and clear communication. Backed by our technology and operational expertise, your representative helps ensure a smooth, reliable experience from start to finish.

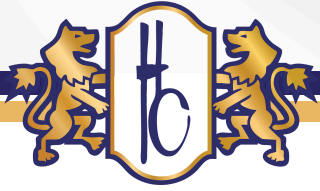


## SOLUS GOWN

- Moisture management keeps skin feeling dry
- Accessible side ties promote patient independence
- Generous length/size offers dignity and the right amount of coverage
- Fade resistant color/print offers a greater sense of assurance & security
- Wrinkle-resistant fabric keeps gown looking fresh and new
- Easy to process, quick drying
- Soft brushed interior/exterior feels better on skin

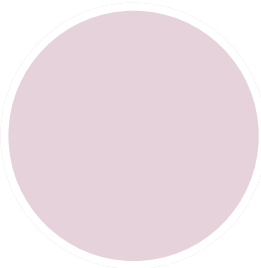


Available in: Blue, Green



## WOMEN'S WELLNESS ROBE

- Solid pink micro-suede front-open patient gown with tie side
- 85% polyester/15% nylon luxe material helps patients feel comfortable and content
- Durable micro-suede is quickly and easily laundered, and offers excellent color retention



Available in: Solid Pink

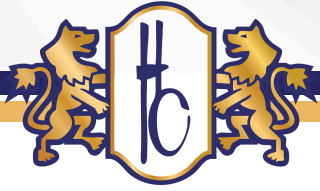


## PONCHO-STYLE MAMMO CAPE

- Our capes are designed to make it easy for technicians to position patients without having to remove any clothing
- Ideal for mammography or physician offices
- One size fits most
- Stylish and comfortable

Available in: Red, Blossom Print





## LINENS FOR EVERYDAY: BED & BATH

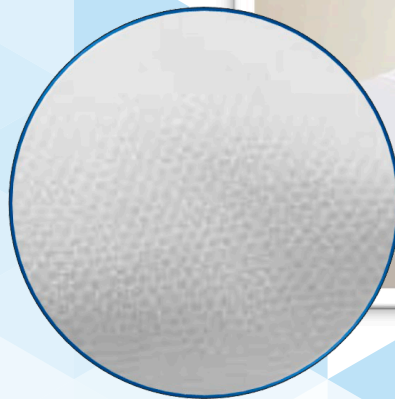
### INTER-BLEND HEAVYWEIGHT PERCALE SHEETS & PILLOWCASES

- Enhanced whiteness, 3.25 OSY
- Intimate blend of 55% cotton/  
45% polyester
- Outstanding comfort and durability
- Pillowcases sized 22"x33" to fit all  
pillows



### DOMESTIC KNITTED FITTED SHEET

- Birdseye pique knit provides  
the maximum protection from  
snags and runs, and is soft to  
the touch





## LINENS FOR EVERYDAY: BED & BATH

### SERPENTINE THERMAL SPREAD

- Tight weave prevents snags
- Our versatile blankets effectively retain body heat



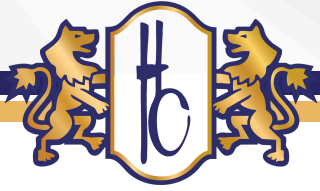
### BATH BLANKET

- Unbleached bath blankets made from exceptional yarns
- Soft, warm, comfortable and highly absorbent
- 82% cotton/18% polyester

### FINE SPUN TERRIES

- Using our finest 16/1 ring-spun cotton, our washcloths are strong with a significantly softer hand

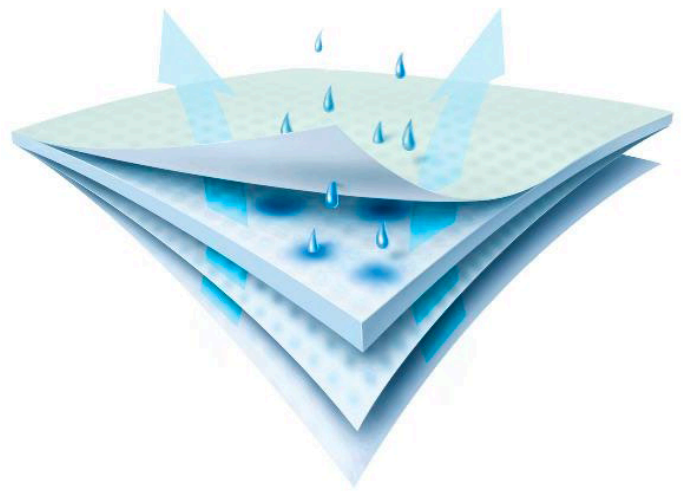


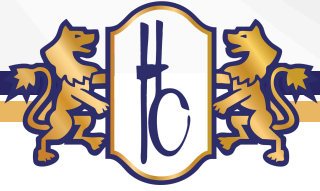


## LINENS FOR EVERYDAY: UNDERPADS

PerforMAX LLT underpads provide outstanding absorbency to keep moisture away from patients while protecting mattresses and bedding.

- Swift-Dry top layer wicks fluid in quickly and moves it to the center core
- Super absorbent core disperses fluid throughout the pad so the top feels dryer quicker
- Bonded construction thins the pad for less bulkiness with no decrease in absorption
- Lays flat with no bunching or rolling





## SPA APPAREL: CHAMOIS SHAWL ROBE & SPA WRAPS

Our chamois microfiber robe is five times more absorbent than cotton, this virtually indestructible soft as flannel fabric is lightweight yet warm. Velcro Towel Wrap is 100% Terry Cotton Velour.

- One size fits most
- Pocket(s)



100% cotton terry velour in two lengths:  
30" for women and 21" for men



## SPA LINENS: BED & TERRIES

**FEELS LIKE HOME<sup>®</sup>**

### SPA LINENS FOR BED & BATH

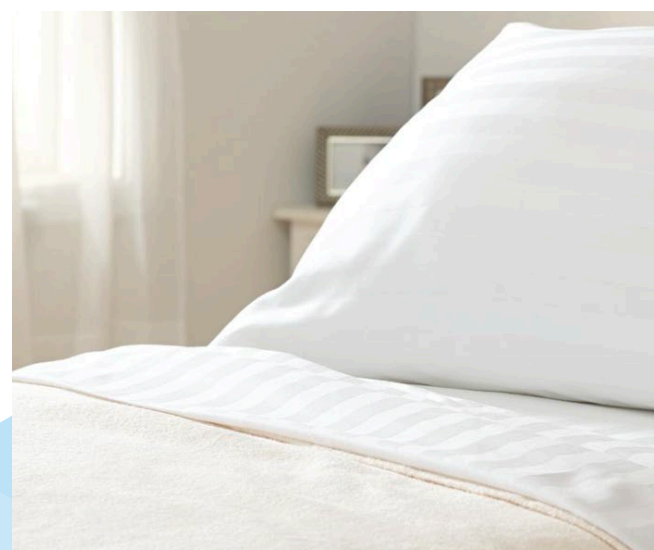
These premium linens offer incredible softness and comfort to help transform your facility into a home away from home for your patients.

### PREMIUM REVERSE SATEEN SHEETS

- Remarkable softness, wrinkle-resistant
- Reverse sateen style adds refinement and elegance
- 60% high-quality pima cotton and 40% polyester for silky soft feel

### FOUR-STAR TERRIES

- Gentle white and beige colors add warmth and rich texture
- Fancy dobby borders
- 86% cotton/14% polyester





## REUSABLE SURGICAL: BARRIER LAB COATS

For added protection, choose from a line of barrier lab coats that support a myriad of situations. Available in unisex, men's and women's styles.

- Made of 99% polyester/1% carbon fiber fluid-resistant material with 100% polyester cuffs
- Two lower pockets and one chest pocket
- Overlapping front closure with four snaps
- Side vent openings for easy access to pants pockets

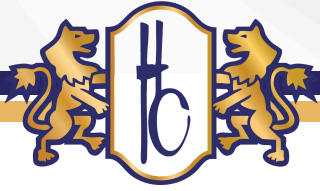
ResiStat  
White



ResiStat  
Blue



# PROTECTIVE APPAREL



## REUSABLE SURGICAL: GOWNS

### BLOCKADE GOWN

- Made of 99% polyester, with 1% carbon to help dissipate static electricity
- 2-ply blockade fabric for the front panel and 3/4 of the sleeves
- 1-ply blockade for the back military collar
- High-density construction resists fluids while maintaining comfort and functionality

### ISOLATION GOWN

- 360-degrees of protection for compliance
- Overlap back, twill tie neck, and back waist closures
- Fluid-resistant fabric made of 100% polyester

2-ply Blockade Gown



Isolation Gown



LEVEL 1

Test Results:  
AATCC 42:2000

AQL:  
<4.5g

Requirements:  
4%

# PROTECTIVE APPAREL



## FULL SERVICE LAB COATS:

Available in Men's, Women's, and Unisex sizes with Full, Knee, Staff and Consultation lengths.

- All Medline styles of lab coats come with three outside pockets, one left breast pocket and two lower pockets.
- Various closure options to choose from to help meet your clinical or personal style requests. Choose standard button closures, zipper front or snap closures.
- Consider SilverTouch® lab coats by Medline. A safe, smart and cost-effective way to protect your lab wear from the growth and multiplication of a broad spectrum of pathogenic microorganisms.\*

Men's

Women's

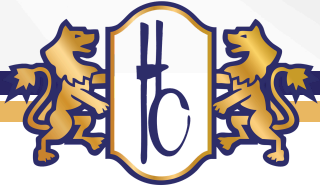
SilverTouch

Consultation

Unisex



# PROTECTIVE APPAREL



## NEW LAB COAT OFFERINGS:

- **Gray Lab Coat:** This gray unisex full-length lab coat is made in an 80% polyester/20% cotton blend.
- **Stretch Lab Coat:** This ladies stretch lab coat includes princess seams and a set-in belt to create an hourglass shape, 4 pockets to hold all of your essentials, and trench coat styling to give a classic tailored look. 54% Cotton/44% Polyester/3% Spandex twill fabric with 2-way stretch allows your coat to move with you.
- **¾ Sleeve Lab Coat:** This ¾ sleeve ladies lab coat has slimming princess seams, deep set-in pockets, and a wraparound adjustable back belt to accentuate your feminine shape. 54% Cotton/44% Polyester/3% Spandex twill fabric with 2-way stretch.

Grey Lab Coat

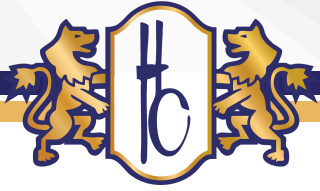


Stretch Lab Coat



¾ Sleeve Lab Coat





## ANGELSTAT® SCRUBS

CHARCOAL

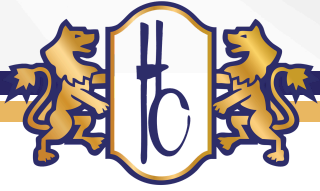
NAVY

PEACOCK

SAPPHIRE

CEIL BLUE





## REVERSIBLE UNISEX TOP - #610

- Generous cut
- Left breast pocket, inside and out
- Set in sleeves
- Available: XS - 5XL



## WARM UP JACKET: #849

- Snap front
- Knit cuffs
- Two lower pockets
- Available: XS - 5XL



## REVERSIBLE UNISEX PANT - #600

- Drawstring waist
- Back pocket
- Available: XS - 5XL



## LADIES 2 POCKET TOP - #893

- Pullover tunic
- Side vents
- Two pocket front
- Available: XS - 3XLA



## UNISEX CARGO PANT - #674

- Elastic waist
- Cargo pockets
- Available: XS - 5XL





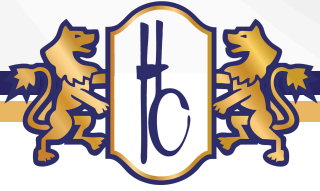
Code	Color	610 <small>CM U</small>	612 <small>CM U</small>	630 <small>CM U</small>	849 <small>CM U</small>	851 <small>CM U</small>	859 <small>CM U</small>	893 <small>CM</small>
NTR	Raspberry	CA CM		CA				
NTJ	Jade	CA CM	CM	CA				
NJT	Emerald	CA		CA				
NHG	Hunter Green	CA		CA				
NBT	Peacock	CA CM		CM				
NTH	Ceil Blue	CA CM	CM	CA CM				
NHT	Sapphire	CA CM	CM	CA CM				
NNT	Navy	CA CM	CM	CA				
NRP	Regal Purple	CA		CA				
NTZ	Misty	CA CM	CM	CA CM				
NCC	Charcoal	CM		CM				

NOTE: Style numbers for the 600, 630 and 610 Navy, Sapphire, Misty, Jade and Ceil are M (i.e. M630NNT\*).

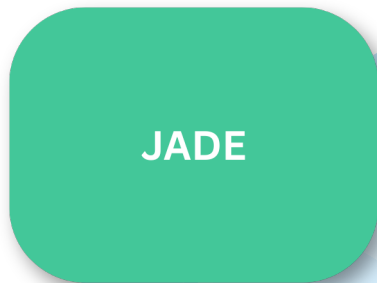
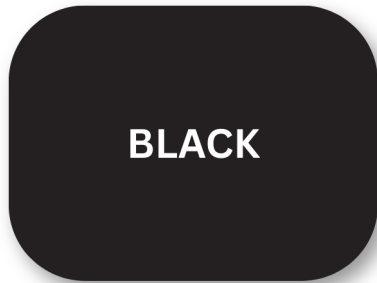


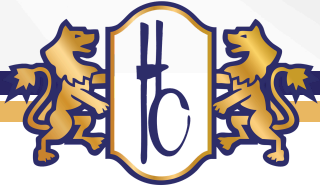
Code	Color	600 <small>CM U</small>	601 <small>U</small>	640 <small>CM U</small>	674 <small>CM NU</small>	854 <small>CM</small>
NTR	Raspberry	CA CM				
NTJ	Jade	CA CM	CM	CM		
NJT	Emerald	CA				
NHG	Hunter Green	CA				
NBT	Peacock	CA CM				
NTH	Ceil Blue	CA CM	CM	CM		
NHT	Sapphire	CA CM		CM		
NNT	Navy	CA CM		CM		
NRP	Regal Purple	CA				
NTZ	Misty	CA CM	CM	CM		
NCC	Charcoal	CM				

NOTE: Style numbers for the 600, 630 and 610 Navy, Sapphire, Misty, Jade and Ceil are M (i.e. M630NNT\*).



## EVERWEAR<sup>®</sup> STRETCH TECH





## EVERWEAR<sup>®</sup> STRETCH TECH

### UNISEX REVERSIBLE 1-POCKET TOP - #310

- Available: XS - 5XL



### UNISEX 2 - POCKET SNAP JACKET WITH KNIT CUFFS - #349

- Available: XS - 5XL



### UNISEX REVERSIBLE 1 - POCKET DRAWSTRING PANT - #300

- Available: XS - 5XL



### WOMEN'S SHORT SLEEVE V-NECK, 3-POCKET TOP - #314

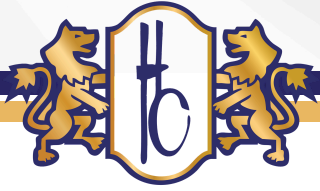
- Available: XS - 5XL



### MEN'S ELASTIC WAIST, 3-POCKET CARGO PANT - #301

- Available: XS - 5XL





			Jackets	
Style 310	Style 311	Style 314	Style 342	Style 349
BLK	BLK	BLK	BLK	BLK
NVY	NVY	NVY	NVY	NVY
RYL	RYL	RYL		RYL
CBL	CBL	CBL	CBL	CBL
CHR	CHR	CHR	CHR	CHR
MTY				MTY
JAD				JAD



Pants		
Style 300	Style 301	Style 302
BLK	BLK	BLK
NVY	NVY	NVY
RYL	RYL	RYL
CBL	CBL	CBL
CHR	CHR	CHR
MTY		MTY
JAD		JAD





## TRACE<sup>®</sup> BY ADI

CHARCOAL

RASPBERRY

NAVY

CEIL BLUE

MISTY

JADE





## TRACE<sup>®</sup> BY ADI

Engineered for comfort with a classic fit, Trace Scrubs provide the essential functionality healthcare workers rely on through the day.

### 55% COTTON / 45% POLYESTER

Cotton-rich blend for comfort with a soft feel that gets softer the more you wash it.

### 4.1 OSY FABRIC WEIGHT

Durable fabric engineered to retain its shape with repeated industrial laundering.

### FADE RESISTANT

Colorfast fabric that holds color wash after wash.



### REVERSIBLE SCRUB TOP

Modest V-Neck

1 Upper Pocket

### REVERSIBLE SCRUB PANT

Waist Tie Color-Coded by Size

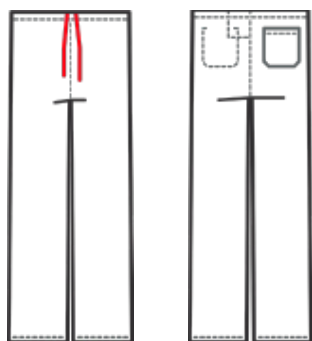
1 Back Pocket



## TRACE<sup>®</sup> BY ADI

### UNISEX REVERSIBLE SCRUB PANT

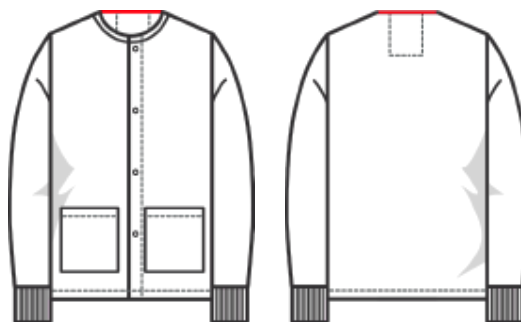
STYLE: TRA1201



SIZES AVAILABLE: XXS-5XL

### UNISEX WARM-UP JACKET

STYLE: TRA1301



SIZES AVAILABLE: XXS-5XL

### UNISEX REVERSIBLE SCRUB TOP

STYLE: TRA1101



SIZES AVAILABLE: XXS-5XL

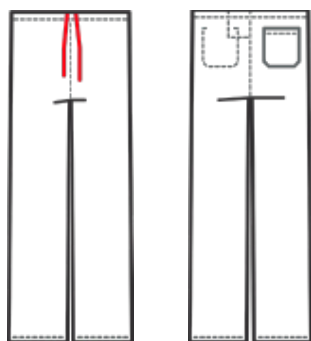




## TRACE<sup>®</sup> BY ADI

### UNISEX REVERSIBLE SCRUB PANT

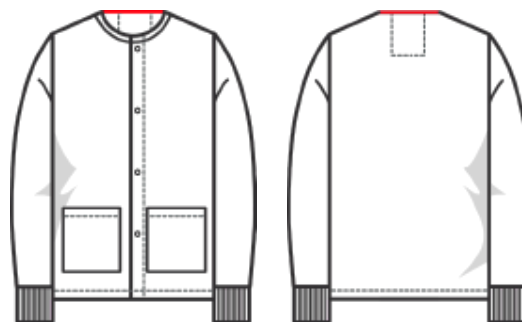
STYLE: TRA1201



SIZES AVAILABLE: XXS-5XL

### UNISEX WARM-UP JACKET

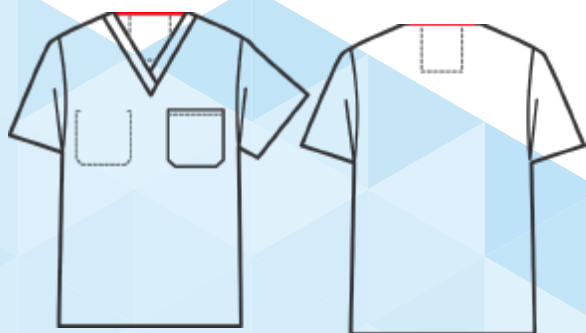
STYLE: TRA1301



SIZES AVAILABLE: XXS-5XL

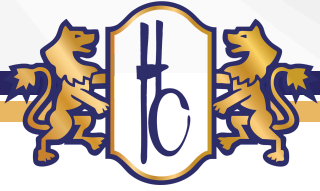
### UNISEX REVERSIBLE SCRUB TOP

STYLE: TRA1101



SIZES AVAILABLE: XXS-5XL





## RESPOND<sup>®</sup> BY ADI

Healthcare demands more than quick reflexes – it requires focus, resilience, and gear that keeps up. Respond scrubs are made for this reality: durable enough for repeated laundering, comfortable enough for long shifts, and built to support the people who never stop moving forward.

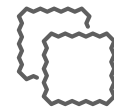
**MODERN FIT**  
UNISEX & WOMEN'S STYLE



**INCLUSIVE SIZES**  
XS-5XL



**FABRIC**  
100% POLYESTER



CHARCOAL

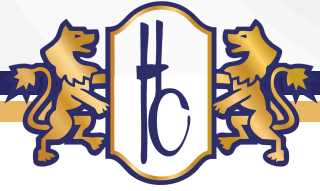
ROYAL

BLACK

NAVY

CEIL BLUE

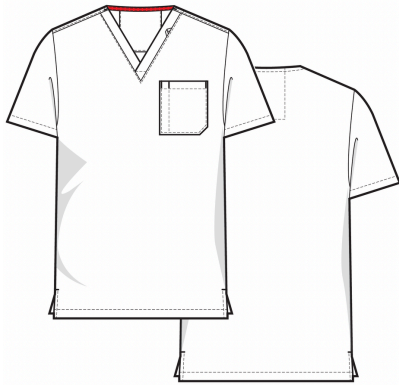
MISTY



## RESPOND<sup>®</sup> BY ADI - UNISEX STYLES

### SCRUB TOP - 1 POCKET

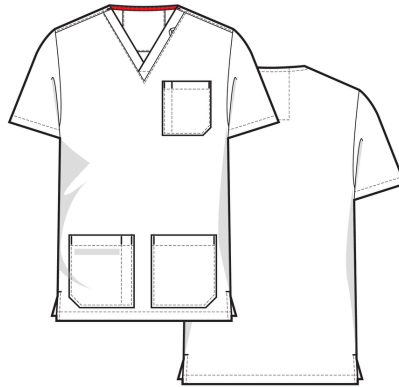
STYLE: RES1100



SIZES AVAILABLE: XS-5XL

### SCRUB TOP - 3 POCKET

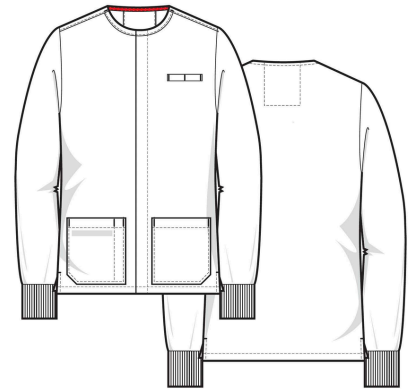
STYLE: RES1101



SIZES AVAILABLE: XS-5XL

### WARM-UP JACKET

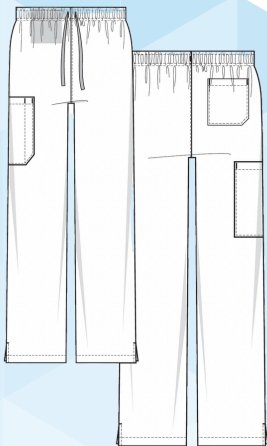
STYLE: RES1300



SIZES AVAILABLE: XS-5XL

### SCRUB PANT - STRAIGHT LEG

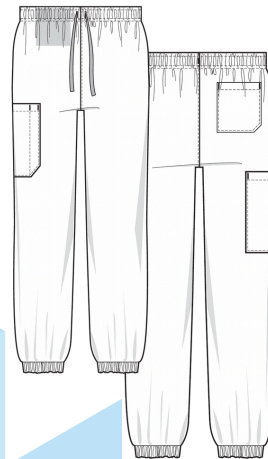
STYLE: RES1200



SIZES AVAILABLE: XS-5XL

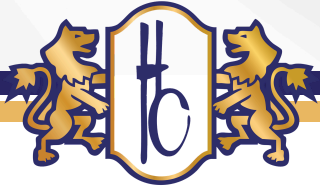
### SCRUB PANT - JOGGER

STYLE: RES1201



SIZES AVAILABLE: XS-5XL





## RESPOND<sup>®</sup> BY ADI - WOMEN'S STYLES

### SCRUB TOP - 3 POCKET

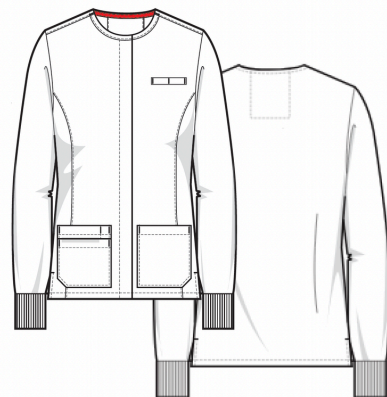
STYLE: RES1103



SIZES AVAILABLE: XS-5XL

### WARM-UP JACKET

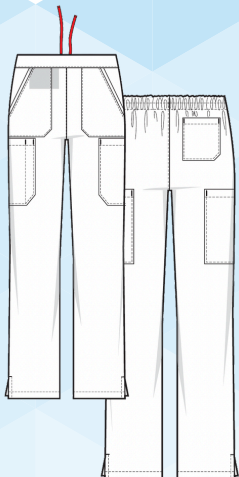
STYLE: RES1301



SIZES AVAILABLE: XS-5XL

### SCRUB PANT - STRAIGHT LEG

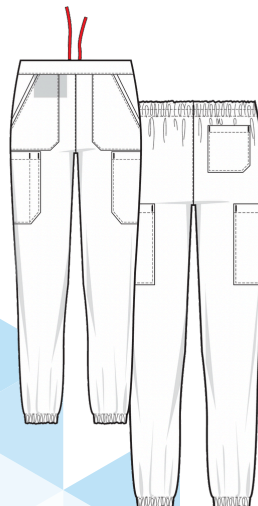
STYLE: RES1202



SIZES AVAILABLE: XS-5XL

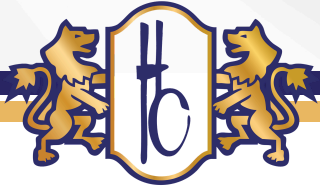
### SCRUB PANT - JOGGER

STYLE: RES1203



SIZES AVAILABLE: XS-5XL

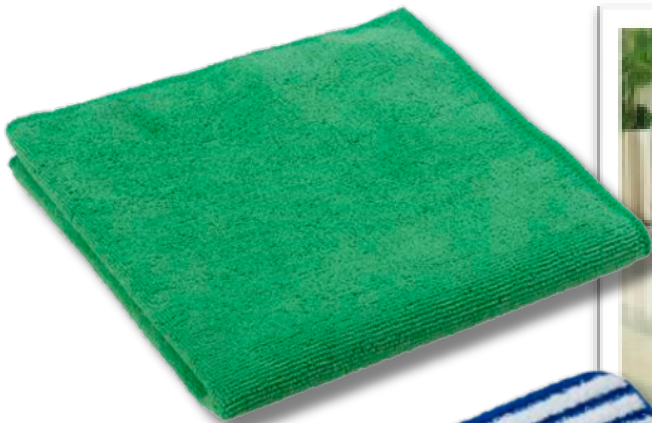


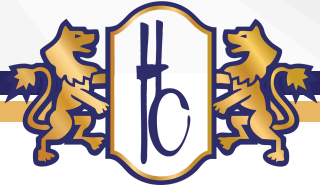


## MICROFIBER:

Reusable microfiber cloths require laundering after every use to release the material collected, sanitize the cloth, and recondition the fibers.

According to a study by the University of California Davis Medical Center (UCDMC), 4 reusable microfiber mop heads last through 500 washings, whereas conventional mops can only withstand 55 washings, leading to more waste and significant lifetime cost savings.\*





## MATS:

Digitally printed logo mats reproduced fine detail, fades and 3D images. Static dissipative nylon yarn treated with Stain Stopper technology.

## SIZES:

2' x 3'

3' x 4'

3' x 5'

3' x 10'

4' x 6'

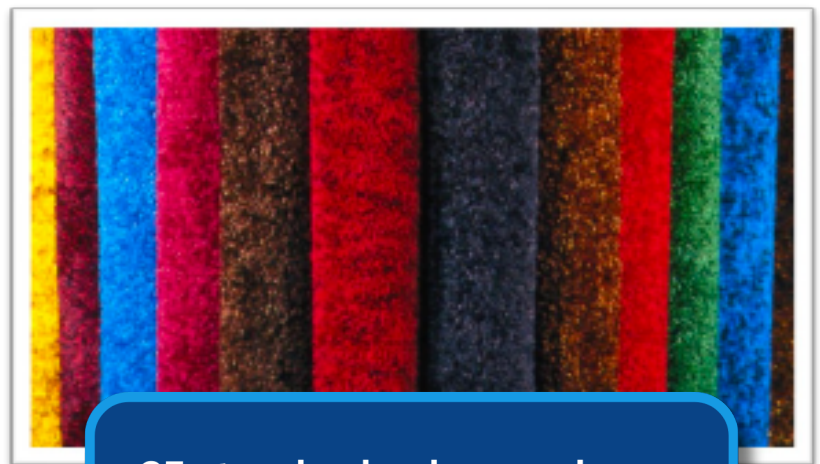
4' x 8'

5' x 8'

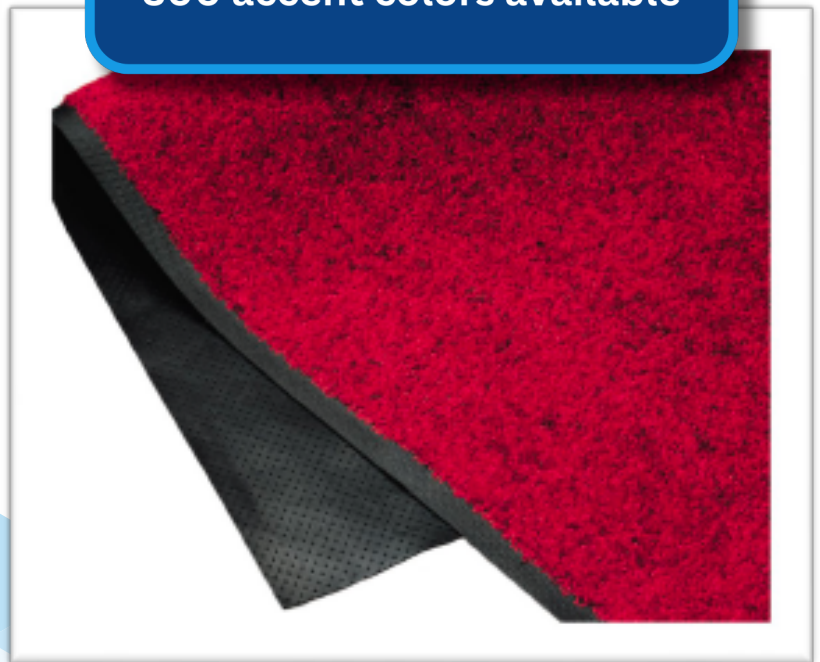
5' x 10'

6' x 10'

6' x 12'

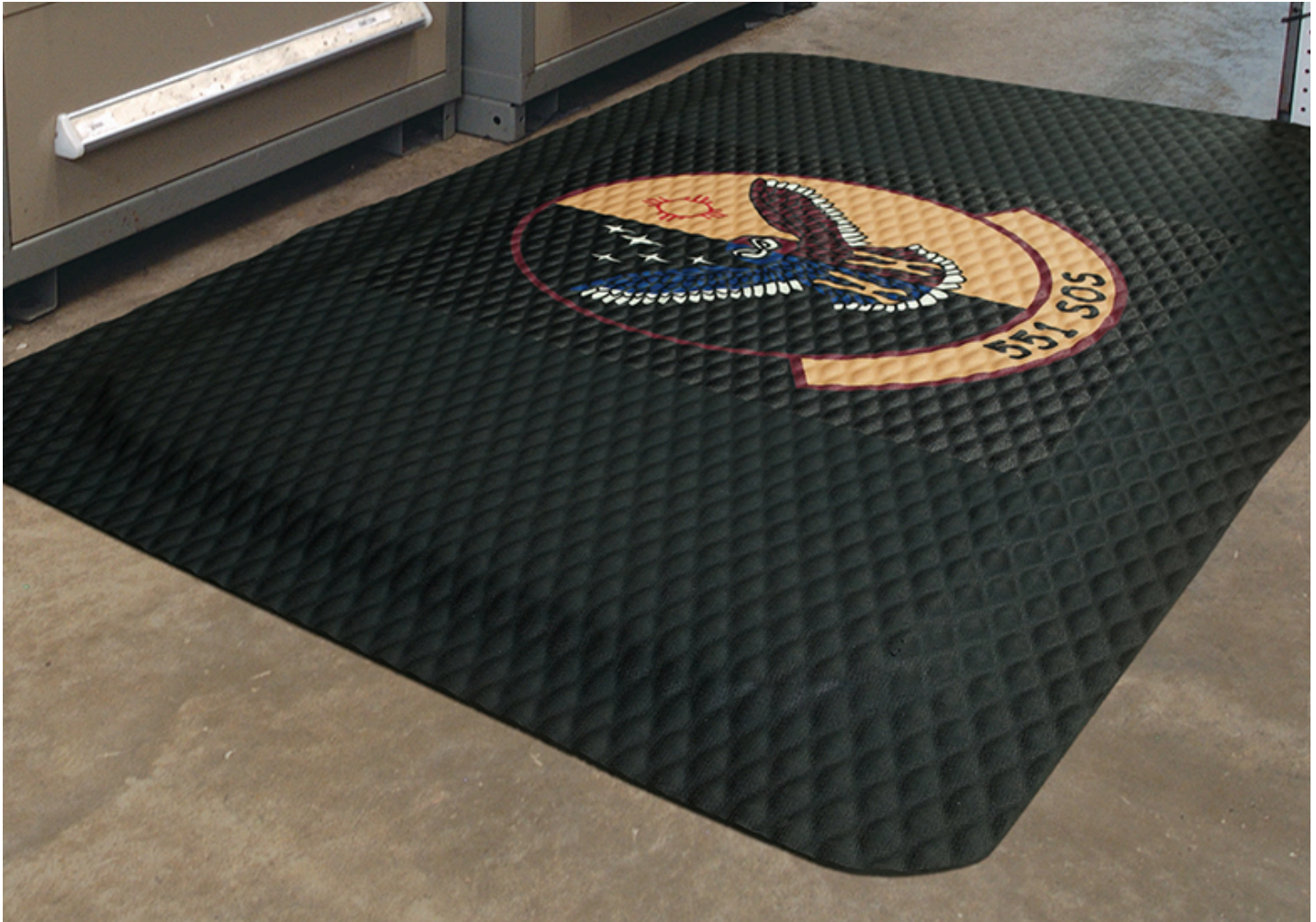


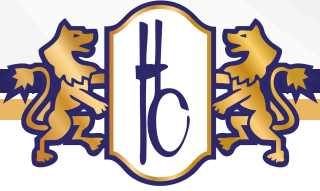
25 standard colors and over  
300 accent colors available





## MATS: A BRANDING OPPORTUNITY



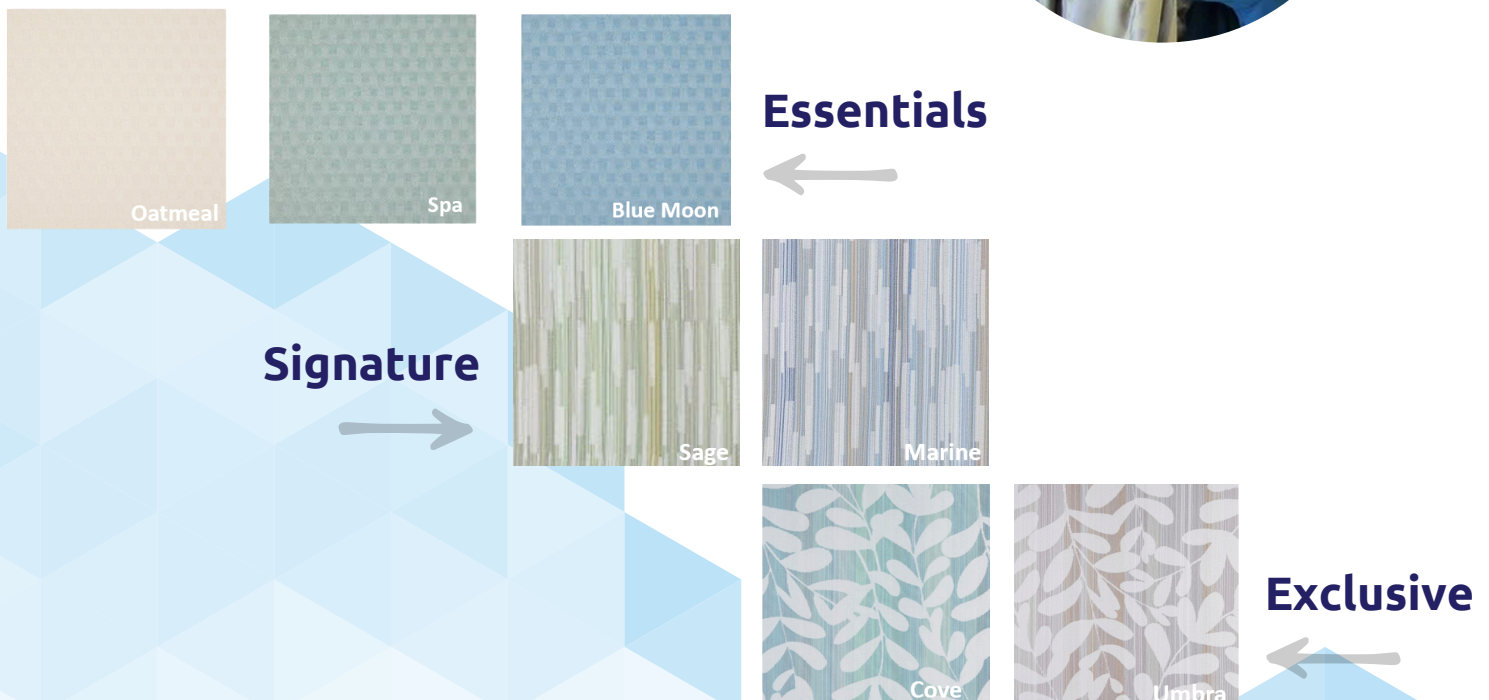


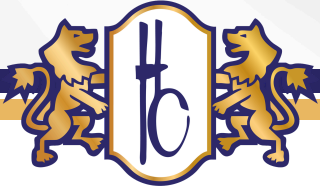
## CUBICLE CURTAINS: FULL SERVICE CURTAIN MANAGEMENT

Our curtain management program provides consistency and peace of mind to health systems by consolidating inventory styles, removing uncertainty in application and standards, and ensuring program adherence system-wide.

### BENEFITS:

- One design across system
- Simplified Service Model
- One point of contact for curtains
- Can be implemented in any size facility
- RFID integrated





## CUBICLE CURTAINS: FULL SERVICE CURTAIN MANAGEMENT

### PROVIDE A TURN-KEY, FULL-SERVICE SOLUTION

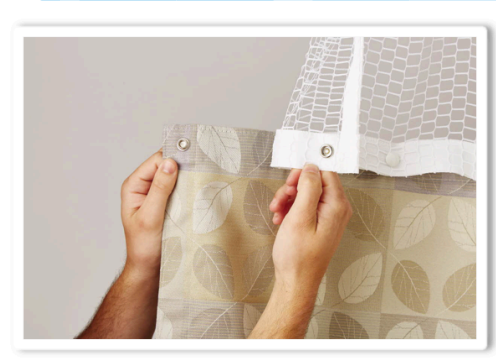
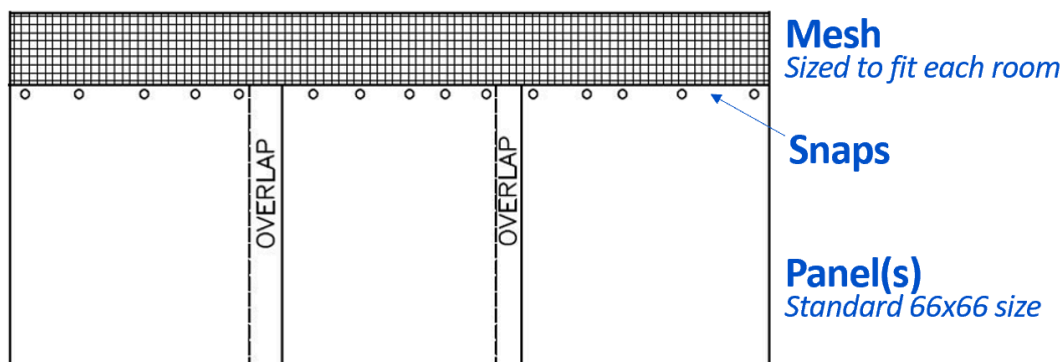
- HandCraft will hang, take down, rotate and launder curtains, eliminating hospital labor and involvement in program management.
- Track and monitor curtain rotations and laundering via supplied reports and dashboard.

### LOW INJECTION COST

- HandCraft will completely manage curtain inventory, eliminating the need for expensive curtain purchases.

### STAFF SATISFACTION

- Never have to worry about having enough inventory when curtains become suddenly soiled.
- Consistent high quality curtains, hangers, carriers and mesh systems.





## RFID PROGRAM

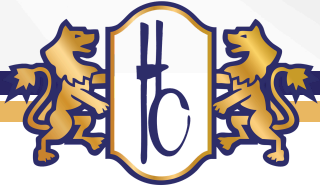
The chips sewn into your linen items are necessary to provide a level of detail about your textiles that benefits your facility in several important ways:

- Lower usage and inventory levels
- Reduce replacement costs and losses
- Identify root causes for linen loss
- Help reduce cost per patient

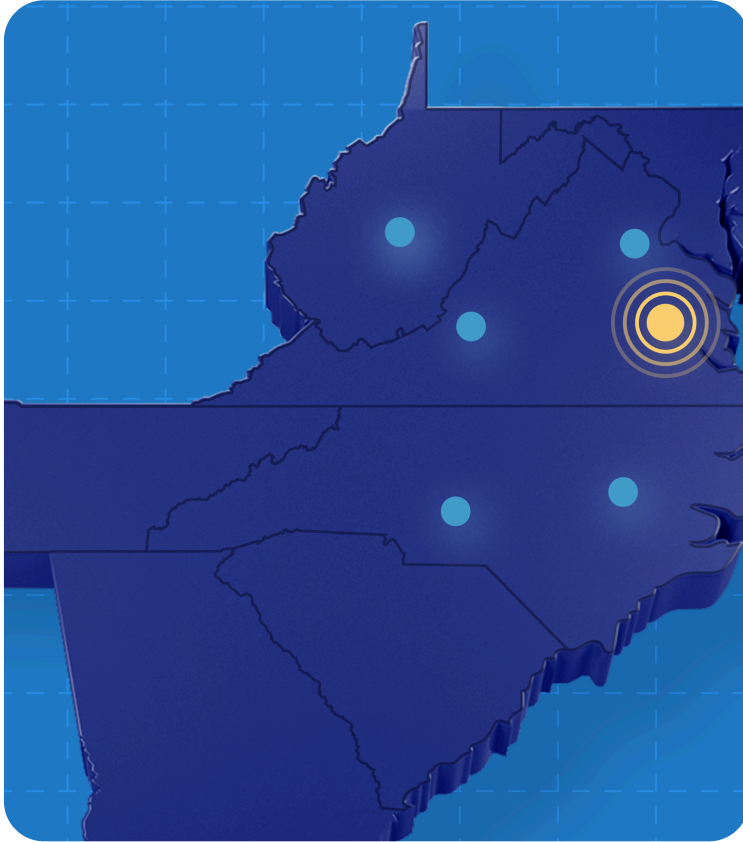


Radio frequency identification (RFID) chips are sewn into various textile items as part of an innovative linen management solution.

# CONTACT US



[www.handcraftservices.com](http://www.handcraftservices.com) | 804-358-8671



## Central Division

2810 Cofer Road,  
Richmond VA 23224

## South East Division

5125 Corporate Hwy,  
Wilson NC 27893

## Southern Division

744 Gallimore Dairy Road,  
High Point NC 27265

## Production Facility

100 Consumer Drive,  
Martinsburg WV 25405

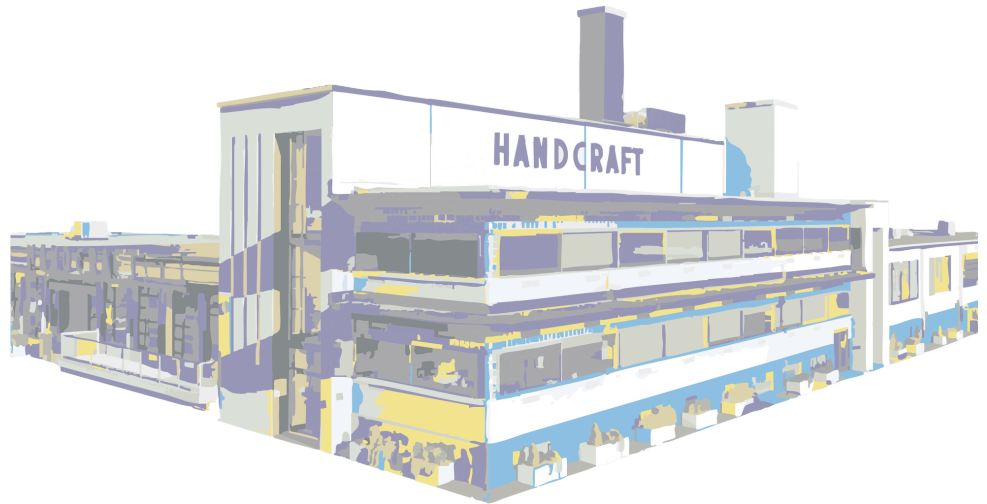
## Production Facility

2810 Cofer Road,  
Richmond VA 23224

## Depot Locations

Springfield, VA  
Roanoke, VA

# Hand Craft®



\*Data on file. <https://www.ucdmc.ucdavis.edu/publish/news/newsroom/23795>. Medline. Data on file. Ave, AngelStat, Feels Like Home, PerforMAX, SilverTouch are registered trademarks of Medline Industries, Inc.