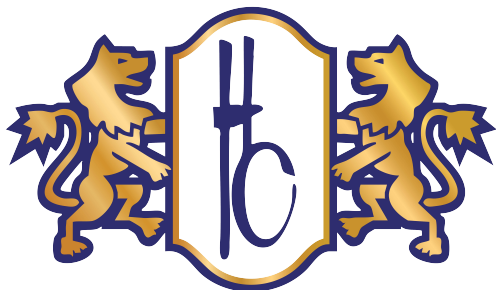




**Healthcare
Linen & Uniform
Specialists**



Product Brochure



**Healthcare
Linen & Uniform
Specialists**

- Patient Gowns
- Linens
 - Feels Like Home[®] Spa Linen
 - Everyday Bed & Bath
- Spa Wear
 - Microfiber Robe
 - Spa Wrap
- Protective Apparel
 - Iso Gowns
 - Lab Coats
- Scrubs & Warm Up Jackets
 - AngelStat[®]
 - EverWear
 - WonderWick
- Microfiber Cleaning Solutions
- Mats
- Cubicle Curtains
- RFID

CONTENTS



About Us:

HandCraft Services specializes in providing today's top healthcare facilities with reusable linen and uniform programs. Our programs are designed to improve patient satisfaction, minimize your facility's costs and enhance your facility's professional image. All programs comply with Federal and State regulations. **We have been family-owned and operated since 1969.**

HandCraft Services provides Hospitals, Ambulatory Surgery Centers, Physician Practices and Long-Term Care quality linen and medical uniforms at a competitive price. At present, HandCraft services over 4,000 hospital and nursing home beds, and hundreds of physician offices that are equivalent to 100 million pounds of healthcare linens per year. The biggest benefit of all is the savings you'll receive when switching to HandCraft. Your facility can save on costly capital investments on equipment, maintenance, inventory or staffing, which means your costs can be carefully budgeted, closely monitored and expensed against operations. HandCraft Services has no financial "surprises" or "hidden costs," just give us a call today.

Dedicated Customer Service.

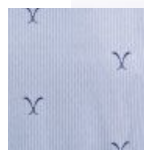
That's right, you get a Customer Service Representative who's truly there for you- whatever happens at your facility- utilizing HandCraft's advanced technology to provide speedy, accurate, quality results. In short, you'll enjoy your high-tech, soft-touch customer experience with HandCraft.



Blue Solus Patient Gown

Features & Benefits

- Moisture management keeps skin feeling dry
- Accessible side ties promote patient independence
- Generous length/size offers dignity and the right amount of coverage
- Fade resistant color/print offers a greater sense of assurance & security
- Wrinkle-resistant fabric keeps gown looking fresh and new
- Easy to process, quick drying
- Soft brushed interior/exterior feels better on the skin

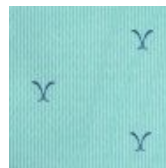




Green Solus Patient Gown

Features & Benefits

- Moisture management keeps skin feeling dry
- Accessible side ties promote patient independence
- Generous length/size offers dignity and the right amount of coverage
- Fade resistant color/print offers a greater sense of assurance & security
- Wrinkle-resistant fabric keeps gown looking fresh and new
- Easy to process, quick drying
- Soft brushed interior/exterior feels better on the skin

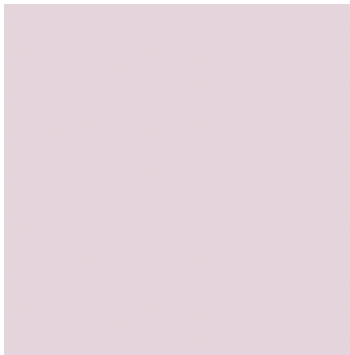




Healthcare
Linen & Uniform
Specialists

Women's Wellness Robe

- Solid pink micro-suede front-open patient gown with tie side
- 85% polyester/15% nylon luxe material helps patients feel comfortable and content
- Durable micro-suede is quickly and easily laundered, and offers excellent color retention



Solid Pink



MDTHR9R04PINK



Healthcare
Linen & Uniform
Specialists

MAMMO TILE BLOSSOM CAPE (poncho style) & MAMMO- PURPLE CAPE

- Our capes are designed to make it easy for technicians to position patients without having to remove any clothing
- Ideal for mammography or physician offices
- Available in Blossom Print or Purple
- One Size Fits Most



Blossom Print



Purple



Feels Like Home® Spa Linens for Bed & Bath

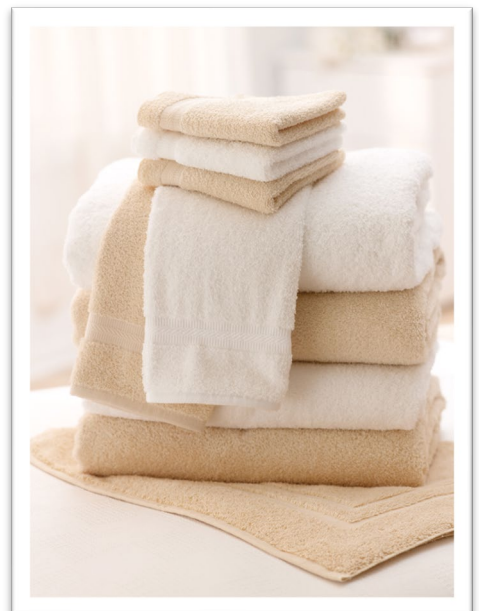
These premium linens offer incredible softness and comfort to help transform your facility into a home away from home for your patients.

Premium Reverse Sateen Sheets

- Remarkable softness, wrinkle-resistant
- Reverse sateen style adds refinement and elegance
- 60% high-quality pima cotton and 40% polyester for silky soft feel

Four-Star Terries

- Gentle white and beige colors add warmth and rich texture
- Fancy dobby borders
- 86% cotton/14% polyester





Healthcare
Linen & Uniform
Specialists

Linens for Everyday: Bed & Bath

Interblend Heavyweight Percale Sheets & Pillowcases

- Enhanced whiteness, 3.25 OSY
- Intimate blend of 55% cotton/45% polyester
- Outstanding comfort and durability
- Pillowcases sized 22x33" to fit all pillows



Domestic Knitted Fitted Sheet

- Birdseye pique knit provides the maximum protection from snags and runs, and is soft to the touch





Healthcare
Linen & Uniform
Specialists

Linens for Everyday: Bed & Bath

Serpentine Thermal Spread

- Tight weave prevents snags
- Our versatile blankets effectively retain body heat



Bath Blanket

- Unbleached bath blankets made from exceptional yarns
- Soft, warm, comfortable and highly absorbent
- 82% Cotton/18% Polyester



Fine Spun Terries

- Using our finest 16/1 ring-spun cotton, our washcloths are strong with a significantly softer hand



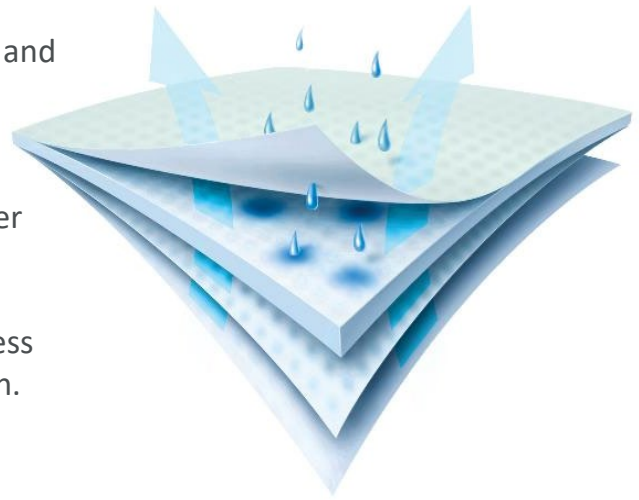


Healthcare
Linen & Uniform
Specialists

Linens for Everyday: Underpads

PerforMAX™ LT underpads provide outstanding absorbency to keep moisture away from patients while protecting mattresses and bedding.

- Swift-Dry top layer wicks fluid in quickly and moves it to the center core.
- Super absorbent core disperses fluid throughout the pad so the top feels dryer quicker.
- Bonded construction thins the pad for less bulkiness with no decrease in absorption.
- Lays flat with no bunching or rolling.



Spa Wear: Chamois Shawl Robe & Spa Wraps

Our chamois microfiber robe is five times more absorbent than cotton, this virtually indestructible soft as flannel fabric is lightweight yet warm. Velcro Towel Wrap is 100% Terry Cotton Velour.

- One size fits most
- Pocket(s)



100% cotton terry velour in two lengths:
30" for women and 21" for men



Healthcare
Linen & Uniform
Specialists





Reusable Surgical: Barrier Lab Coats

For added protection, choose from a line of barrier lab coats that support a myriad of situations. Available in unisex, men's and women's styles.

- Made of 99% polyester/1% carbon fiber fluid-resistant material with 100% polyester cuffs
- Two lower pockets and one chest pocket
- Overlapping front closure with four snaps
- Side vent openings for easy access to pants pockets





Healthcare
Linen & Uniform
Specialists

Reusable Surgical: Gowns

Blockade Gown

- Made of 99% polyester, with 1% carbon to help dissipate static electricity
- 2-ply Blockade fabric for the front panel and 3/4 of the sleeves
- 1-ply Blockade for the back Military collar
- High-density construction resists fluids while maintaining comfort and functionality

Isolation Gown

- 360-degrees of protection for compliance
- Overlap back, Twill tie neck, and back waist closures
- Fluid-resistant fabric made of 100% polyester

2-ply Blockage Gown



Isolation Gown



LEVEL 1

Test Results	AQL	Requirements
AATCC 42:2000	<4.5g	4%



Healthcare
Linen & Uniform
Specialists

Full Service Lab Coats:

Available in Men's, Women's and Unisex sizes with Full, Knee, Staff and Consultation lengths.

- All Medline styles of lab coats come with three outside pockets, one left breast pocket and two lower pockets.
- Various closure options to choose from to help meet your clinical or personal style requests. Choose standard button closures, zipper front or snap closures.
- Consider SilverTouch® lab coats by Medline. A safe, smart and cost-effective way to protect your lab wear from the growth and multiplication of a broad spectrum of pathogenic microorganisms.*

Men's

Ladies

SilverTouch

Consultation

Unisex





New Lab Coat Offerings:

- **Gray Lab Coat:** This gray unisex full-length lab coat is made in an 80% polyester/20% cotton blend.
- **Stretch Lab Coat:** This ladies stretch lab coat includes princess seams and a set-in belt to create an hourglass shape, 4 pockets to hold all of your essentials, and trench coat styling to give a classic tailored look. 54% Cotton/44% Polyester/3% Spandex twill fabric with 2-way stretch allows your coat to move with you.
- **¾ Sleeve Lab Coat:** This ¾ sleeve ladies lab coat has slimming princess seams, deep set-in pockets, and a wraparound adjustable back belt to accentuate your feminine shape. 54% Cotton/44% Polyester/3% Spandex twill fabric with 2-way stretch.

Gray Lab Coat



Stretch Lab Coat



¾ Sleeve Lab Coat





Healthcare
Linen & Uniform
Specialists

AngelStat®: Our Core Offering

Charcoal

Navy

Peacock

Sapphire

Ceil Blue



Reversible Unisex Top - #610

Generous Cut
Left breast pocket, inside and out
Set In Sleeves
Available: XS – 5XL



Warm Up Jacket - #849

Snap Front
Knit Cuffs
Two Lower Pockets
Available: XS – 5XL



Reversible Unisex Pant- #600

Drawstring Waist
Back Pocket
Available: XS – 5XL



Ladies 2 Pocket Top- #893

Pullover Tunic
Side Vents
Two Pocket Front
Available: XS – 3XLA



Unisex Cargo Pant - #674

Elastic Waist
Cargo Pockets
Available: XS – 5XL



Need something beyond our core offering? We can help.



Code	Color	610 	612 	630 	849 	851 	859 	893
NTR	Raspberry	CA CM		CA				
NTJ	Jade	CA CM	CM	CA				
NJT	Emerald	CA		CA				
NHG	Hunter Green	CA		CA				
NBT	Peacock	CA CM		CM				
NTH	Ceil Blue	CA CM	CM	CA CM				
NHT	Sapphire	CA CM	CM	CA CM				
NNT	Navy	CA CM	CM	CA				
NRP	Regal Purple	CA		CA				
NTZ	Misty	CA CM	CM	CA CM				
NCC	Charcoal	CM		CM				

NOTE: Style numbers for the 600, 630 and 610 Navy, Sapphire, Misty, Jade and Ceil are M (i.e. M630NNT*).



Code	Color	600 	601 	640 	674 	854
NTR	Raspberry	CA CM				
NTJ	Jade	CA CM	CM	CM		
NJT	Emerald	CA				
NHG	Hunter Green	CA				
NBT	Peacock	CA CM				
NTH	Ceil Blue	CA CM	CM	CM		
NHT	Sapphire	CA CM		CM		
NNT	Navy	CA CM		CM		
NRP	Regal Purple	CA				
NTZ	Misty	CA CM	CM	CM		
NCC	Charcoal	CM				

NOTE: Style numbers for the 600, 630 and 610 Navy, Sapphire, Misty, Jade and Ceil are M (i.e. M630NNT*).



Everwear® Stretch Tech

Black

Navy

Royal

Ciel

Charcoal

Misty

Jade



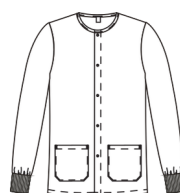
Unisex Reversible 1-Pocket Top - #310

Available: XS –5XL



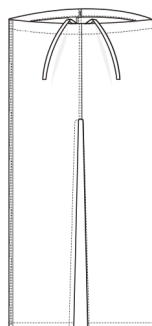
Unisex 2- Pocket Snap Jacket with Knit Cuffs - #349

Available: XS –5XL



Unisex Reversible 1-Pocket Drawstring Pant - #300

Available: XS –5XL



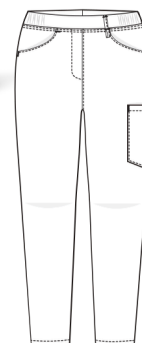
Women's Short Sleeve V-Neck, 3-Pocket Top - #314

Available: XS –5XL











Men's Elastic Waist, 3-Pocket Cargo Pant- #301

Available: XS –5XL



Need something beyond our core offering? We can help.

			Jackets	
				
Style 310	Style 311	Style 314	Style 342	Style 349
BLK	BLK	BLK	BLK	BLK
NAVY	NAVY	NAVY	NAVY	NAVY
RYL	RYL	RYL		RYL
CBL	CBL	CBL	CBL	CBL
CHR	CHR	CHR	CHR	CHR
MTY				MTY
JAD				JAD

Pants		
		
Style 300	Style 301	Style 302
BLK	BLK	BLK
NAVY	NAVY	NAVY
RYL	RYL	RYL
CBL	CBL	CBL
CHR	CHR	CHR
MTY		MTY
JAD		JAD



Healthcare
Linen & Uniform
Specialists

WonderWink®: LOOK GOOD, FEEL GREAT.

Black

Pewter

Navy

Ceil

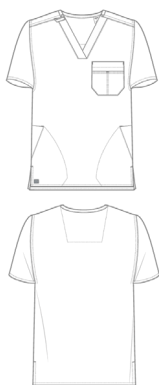
Teal



Unisex V-Neck Top

Unisex Fit 100% Polyester

- Size color coding at interior neckline
- Hidden lower pockets with notched corners to reduce lint collection
- WonderWink® signature triple pocket at chest
- Clean, subtle WonderWink branding
- Flat loop at shoulder to prevent tangling in the wash
- Flattering and durable stitching
- Vented bottom hems



Unisex Warmup Jacket

Unisex Fit 100% Polyester

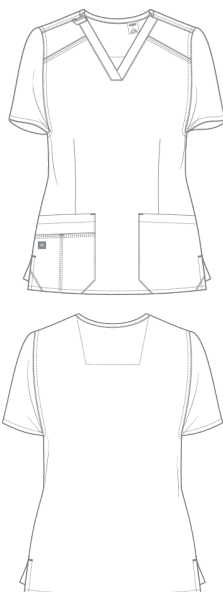
- Size color coding at interior neckline
- Two lower pockets and one chest pocket with notched corners to reduce lint collection
- WonderWink® signature triple pocket at chest
- Flat loop at shoulder to prevent tangling in the wash
- Flattering and durable stitching
- Hidden snap buttons at front opening
- Soft rib knit cuff



Women's V-Neck Top

Women's Modern Fit 100% Polyester

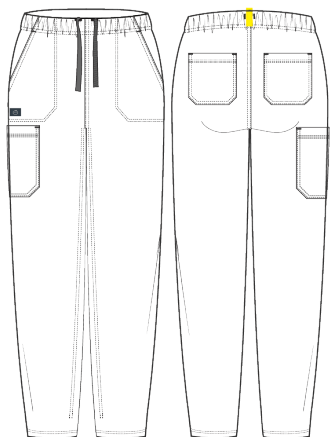
- Size color coding at interior neckline
- Two lower pockets, with notched pocket corners to reduce lint collection
- WonderWink® signature triple pocket at chest
- Clean, subtle WonderWink branding
- Flat loop at shoulder to prevent tangling in the wash
- Flattering and durable stitching
- Vented bottom hems



Unisex Utility Cargo Pants

Unisex Fit 100% Polyester

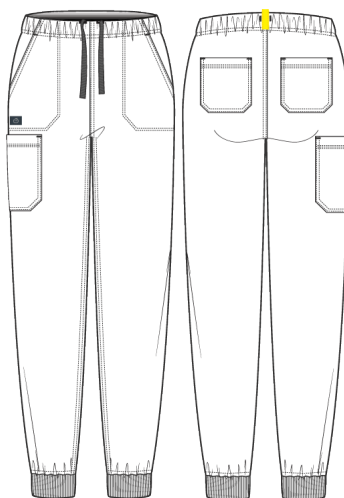
- Drawstring waist and elastic back
- Two front slash pockets, one cargo pocket, one back pocket
- Size color coding at interior waistbands
- Notched pocket corners to reduce lint collection
- Clean, subtle WonderWink branding
- Flattering and durable stitching



Unisex Jogger Pant

Unisex Fit 100% Polyester

- Full elastic waist with drawstring
- Two front slash pockets, one cargo pocket, two back pockets
- Size color coding at back waistbands
- Notched pocket corners on cargo and back pockets to reduce lint collection
- Clean, subtle WonderWink® branding
- Flattering and durable stitching
- Elastic knit cuffs



Jacket available at a later date

Women's V-Neck Top



Women's Modern Fit
100% Polyester

Size color coding at
interior neckline

Two lower pockets,
with notched pocket
corners to reduce lint
collection

WonderWink®
signature triple pocket

Clean, subtle
WonderWink®branding

Flat loop at shoulder
to prevent tangling in
the wash

Flattering and durable
stitching

Vented bottom hems

Sizes:
XS - 5XL
(2XL-5XL extra charge)
(Size M length: 27 ¼")

Black - 1600

Pewter - 1601

Navy - 1602

Royal - 1603

Ceil - 1604

Teal - 1605

Unisex V-Neck Top



Unisex Fit
100% Polyester

Size color coding at
interior neckline

Hidden lower pockets
with notched corners to
reduce lint collection

WonderWink®
signature triple pocket
at chest

Clean, subtle
WonderWink®branding

Flat loop at shoulder
to prevent tangling in
the wash

Flattering and durable
stitching

Vented bottom hems

Sizes:
XS - 5XL
(2XL-5XL extra charge)
(Size M length: 29 ½")

Black - 1612

Pewter - 1613

Navy - 1614

Royal - 1615

Ceil - 1616

Teal - 1617

Unisex Utility Cargo Pant



Unisex Fit
100% Polyester

Drawstring waist and
elastic back

Two front slash
pockets, one cargo
pocket, one back
pocket

Size color coding at
interior waistbands

Notched pocket
corners to reduce lint
collection

Clean, subtle
WonderWink®branding

Flattering and durable
stitching

Sizes:
Regular: XS - 5XL
(2XL-5XL extra charge)
Petite/Short: XS - 3XL
(extra charge)
Tall: XS - 3XL (extra charge)
(Size M leg opening: 8 ½")

Black - 1656

Pewter - 1657

Navy - 1658

Royal - 1659

Ceil - 1660

Teal - 1661

Unisex Warmup Jacket



Unisex Fit
100% Polyester

Size color coding at
interior neckline

Two lower pockets and
one chest pocket with
notched corners to
reduce lint collection

WonderWink®
signature triple pocket
at chest

Clean, subtle
WonderWink®branding

Flat loop at shoulder
to prevent tangling in
the wash

Flattering and durable
stitching

Hidden snap buttons
at front opening

Soft rib knit cuff

Sizes:
XS - 5XL
(2XL-5XL extra charge)
(Size M length: 29 ½")

Black - 1624

Pewter - 1625

Navy - 1626

Royal - 1627

Ceil - 1628

Teal - 1629

THE WONDERWINK FIT DIFFERENCE: EXPECT COMFORT IL FRIENDLY SCRUBS

Conventional apparel grading uses one standard pattern throughout all sizes. WonderWink® fits are created exclusively for each size in order to contour and compliment the curves of the body. We pay close attention to all aspects of the garment to ensure the most comfortable and flattering fit for each style.

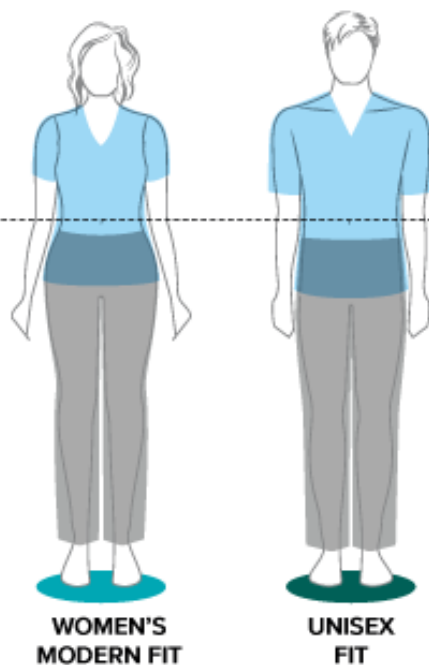
NATURAL WAIST

WOMEN'S MODERN FIT:

Cut closer to your shape for a flattering and contoured look without sacrificing comfort.

UNISEX FIT:

Relaxed and roomy to accommodate a full range of shapes and sizes.



WOMEN'S
MODERN FIT

UNISEX
FIT

Women's Modern Fit	XS	S	M	L	XL	2XL	3XL	4XL	5XL
Ready-to-Wear	2-4	6-8	10-12	14-16	18-20	20-22	24-26	28-30	32-34
Bust	32-33	34-35	36-38	39-42	43-46	47-50	51-54	55-58	59-63
Waist	24-25	26-27	28-30	31-34	35-38	39-42	43-46	47-50	51-55
Hip	35-36	36-37	38-40	41-44	45-48	49-52	53-56	57-60	61-64
Inseam: Regular-31", Petite-28 1/2", Tall-33"									

Unisex Fit	XS	S	M	L	XL	2XL	3XL	4XL	5XL
Chest/Bust	33-34	35-37	38-40	41-44	45-48	49-52	53-56	57-60	61-64
Waist	25-26	27-29	30-32	33-36	37-40	41-44	45-48	49-52	53-57
Hip	34-35	36-38	39-41	42-45	46-49	50-53	54-57	58-61	62-65
Inseam: Regular-31", Petite/Short-28 1/2", Tall-33"									



Microfiber:

Reusable microfiber cloths require laundering after every use to release the material collected, sanitize the cloth, and recondition the fibers.

According to a study by the University of California Davis Medical Center (UCDMC), 4 reusable microfiber mop heads last through 500 washings, whereas conventional mops can only withstand 55 washings, leading to more waste and significant lifetime cost savings.*





Mats:

Digitally printed logo mats reproduced fine detail, fades and 3D images.

Static dissipative nylon yarn treated with Stain Stopper technology.

Sizes:

2'X3'

3'X4'

3'X5'

3'X10'

4'X6'

4'X8'

5'X8'

5'X10'

6'X10'

6'X12'

Custom sizes up to 40'





Healthcare
Linen & Uniform
Specialists

Mats: A branding opportunity



Shown: 3' x 6', Horizontal



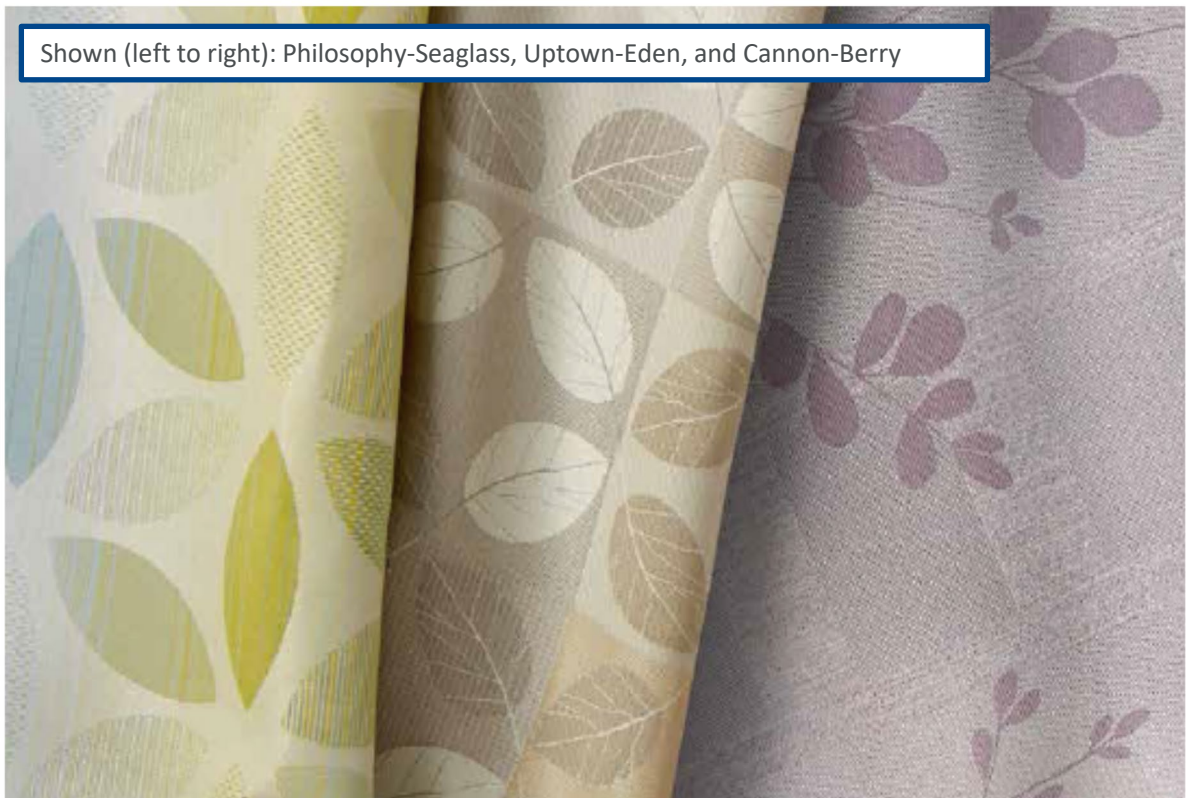


Cubicle Curtains:

Exclusive designs, design-grade decorative textiles

- Patterns and colors to differentiate your facility.
- Flame-retardant and water-repellant options.
- Fabrics available with silver threads or antimicrobial-treated*.

Shown (left to right): Philosophy-Seaglass, Uptown-Eden, and Cannon-Berry



* This product is treated with an antimicrobial additive to protect the product. This product does not protect users or others against bacteria, germs or other disease organisms

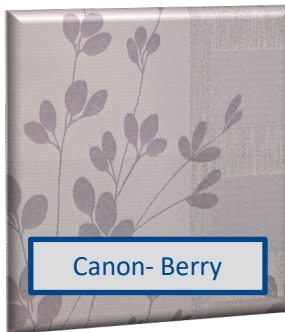
This is just a snapshot of our fabric gallery. Want to see more? We can help.



Healthcare
Linen & Uniform
Specialists

Cubicle Curtains:

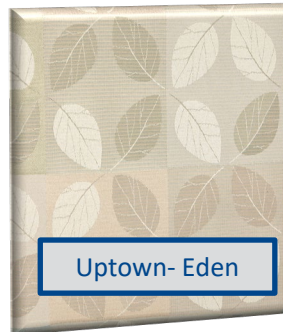
Exclusive designs, design-grade decorative textiles



Canon- Berry



Sonata- Gelato



Uptown- Eden



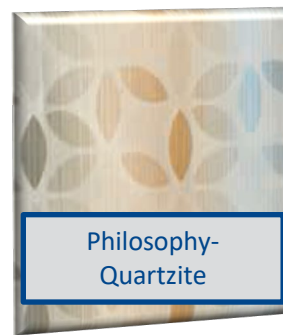
Collective- Spring



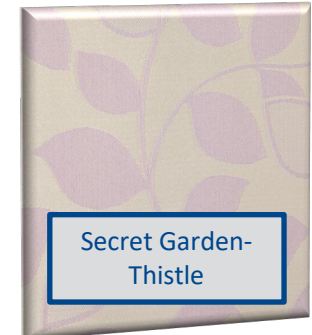
Restoring Forces-
Meadow



Shadow Leaf-
Lemon Grass



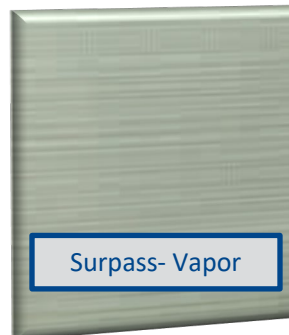
Philosophy-
Quartzite



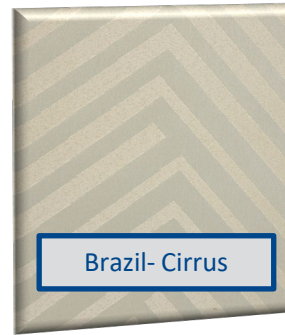
Secret Garden-
Thistle



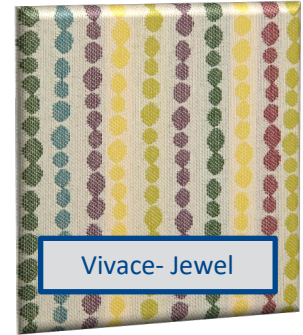
Arcadia- Hydro



Surpass- Vapor



Brazil- Cirrus



Vivace- Jewel

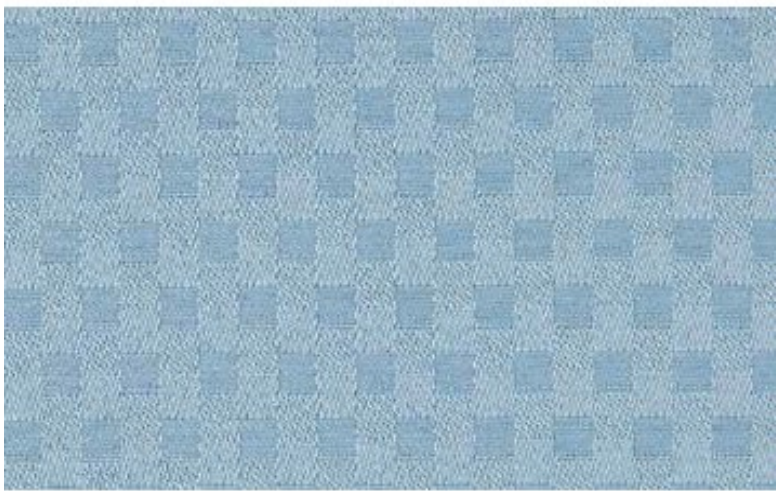
Collections shown have multiple colorways to choose from.



Healthcare
Linen & Uniform
Specialists

Cubicle Curtains: Spring Frost Collection

- Provide privacy for patients and staff
- Create a uniform look



BLUE MOON



OATMEAL



BUFF



COOKIE



NUTMEG



TAUPE



CARAWAY



RAFFIA



CHESTNUT



PENNY



CINNAMON



CHOCOLATE



TARA



KIWI



PALM



EDEN



SPA



WILLOW



STINGRAY



MINT



GREENMIST



DELFT



HYDRO



RFID Program:

The chips sewn into your linen items are necessary to provide a level of detail about your textiles that benefits your facility in several important ways:

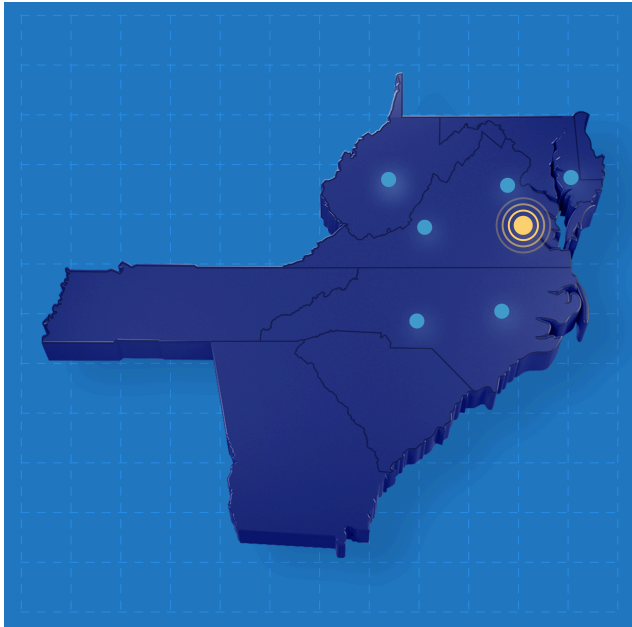
- Lower usage and inventory levels
- Reduce replacement costs and losses
- Identify root causes for linen loss
- Help reduce cost per patient

Radio frequency identification (RFID) chips sewn into various textile items as part of an innovative linen management solution.





handcraftservices.com
info@handcraftservices.com



Central Division

2810 Cofer Road,
Richmond VA 23224

Southern Division

744 Gallimore Dairy Road,
High Point NC 27265

South East Division

5125 Corporate Hwy,
Wilson NC 27893

Production Facility

100 Consumer Drive,
Martinsburg WV 25405

Production Facility

2810 Cofer Road,
Richmond VA 23224

Depot Locations

Springfield, VA
Roanoke, VA



**Healthcare
Linen & Uniform
Specialists**

*Data on file. <https://www.ucdmc.ucdavis.edu/publish/news/newsroom/2379> 5. Medline. Data on file. Ave, AngelStat, Feels Like Home, PerformAX, SilverTouch are registered trademarks of Medline Industries, Inc.